



Artists that use
analogous colours



Analogous colours are groups of three or four colours that are next to each other on the colour wheel, sharing a common colour, with one being the dominant colour, which tends to be a primary or secondary colour and a tertiary. Red, orange, and red-orange are examples.

Analogous colour schemes are often found in nature and are harmonious and pleasing to the eye.









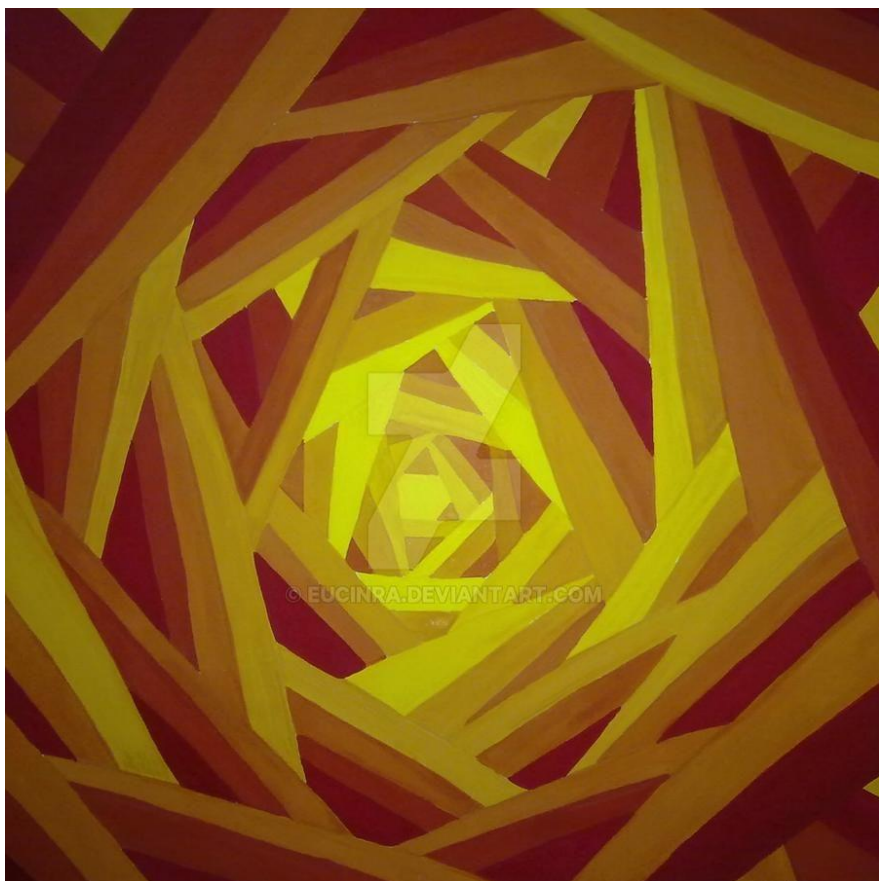
Analogous Color Wheel













Mrs Aveyard's Challenge -

- Choose an image that uses **analogous colours** from an internet search or use one of the images I have shown you here.
- Create your colour palette which should be no more than four colours. These should be the colours you can see in your image and are always next to each other on your colour wheel.
- Next use **only** these colours to create your own image. If you are unsure of what to draw you could create an abstract image. Maybe take your pencil for a walk! (Keeping the pencil on the page move it around and see what happens).

Remember there is no right or wrong way to create art. Most importantly...ENJOY!